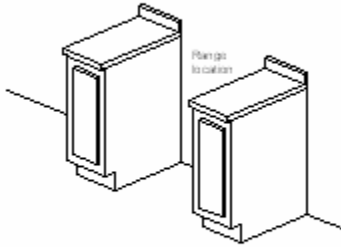


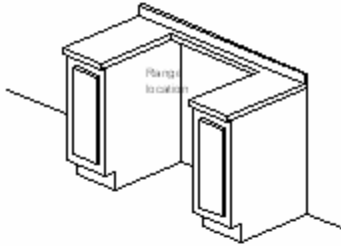
3 BASIC RANGE APPLICATIONS

FREE STANDING RANGE



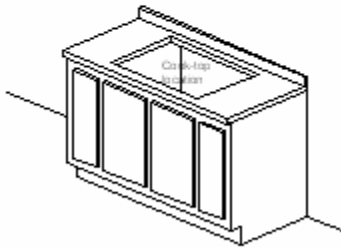
A free standing range will fit in-between two counter tops or counter top and wall or similar situation. The industry standard width of a free standing range is 30". If your range is something different please advise your Imperial Counters contact as soon as possible in your order process.

SLIDE IN RANGE



A slide in range also will fit in-between two counter tops but may require a narrow piece of counter top between the back of the range and the wall. Supply your Imperial Counters contact with your range model number or supply them with the range installation instructions.

DROP IN COOK TOP



A drop in cook top will need a hole cut into the deck of the countertop. Supply your Imperial Counters contact of your cook top model number or supply them with the cook top installation instructions or cut out template.